

TP/LCD Screen Replacement on MaxiSys MS906 MS906BT MS906TS

LATEST TP SCREEN PART NUMBER

501003930	MS906
501003932	MS906BT

TOOLS REQUIRED:

- Iron Solider
- Allen Key 2.5mm
- Allen Key 3.0mm
- Front Shell Kit (TP + LCD Screen)

BEFORE PERFORM TP SCREEN REPLACEMENT KINDLY UPDATE LATEST

OPERATING SYSTEM FOR THE DEVICE

Maxisys 906 V03.46.00

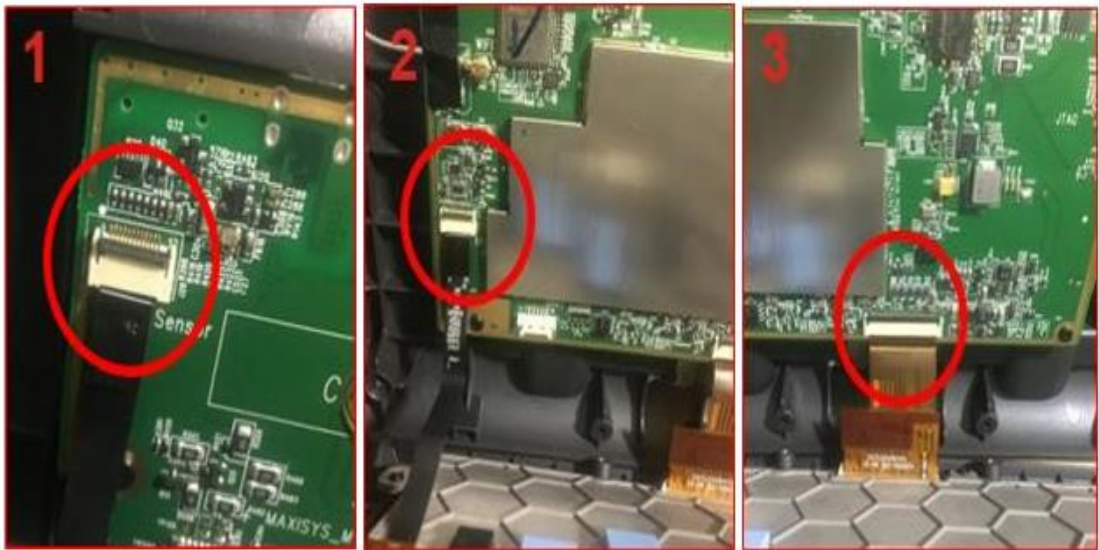
Maxisys 906BT V03.31.00

1. First step uses the Allen Keys (2,5mm and 3mm) to remove the ten (10) bolts at the back shell of the tool.

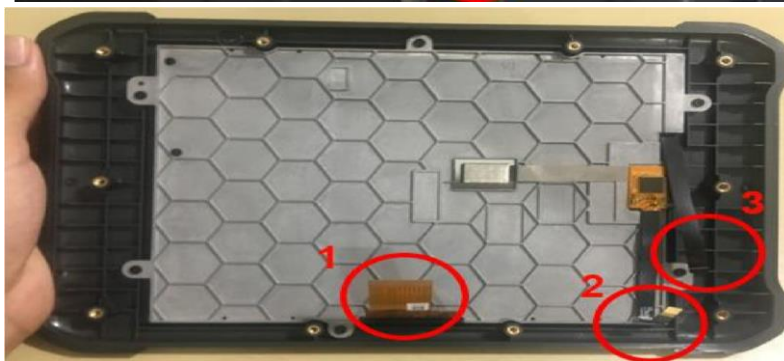


2. To remove the front shell from the back shell, you need to remove the connections between the Main Board and Light Sensor, Touch Panel and LCD Screen, on that

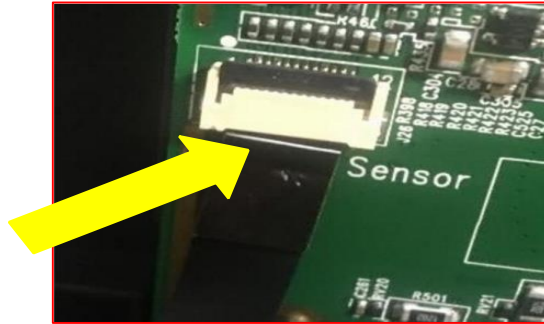
order. To remove the connections, you should release the secure-clip before remove it.



3. Now we should make the connections between the Main Board and the new front shell, which include the new Touch Panel and LCD Screen. Remember to close the secure-clip on each connection between the Main Board and Light Sensor, Touch Panel and LCD Screen.

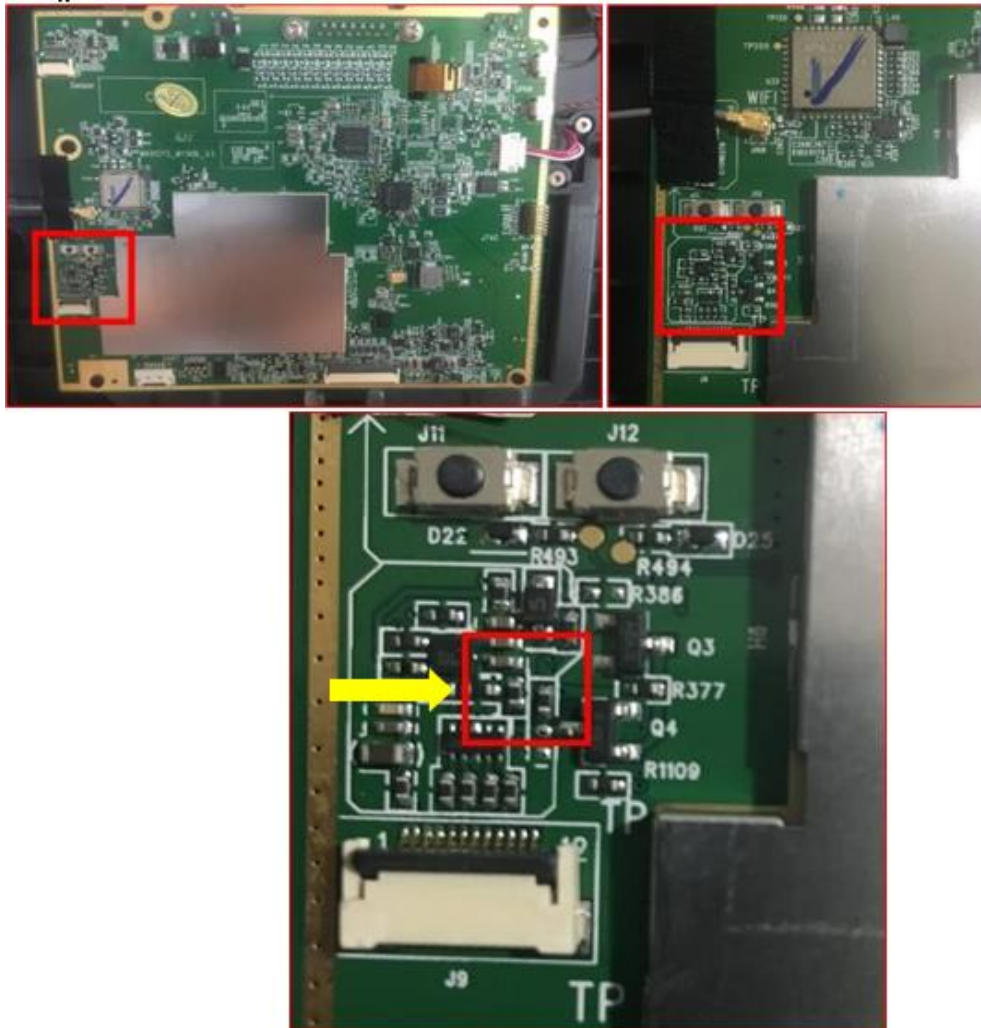


Note: Please make sure the white line is as close as it can to the connection, if yes, please close the secure clip.

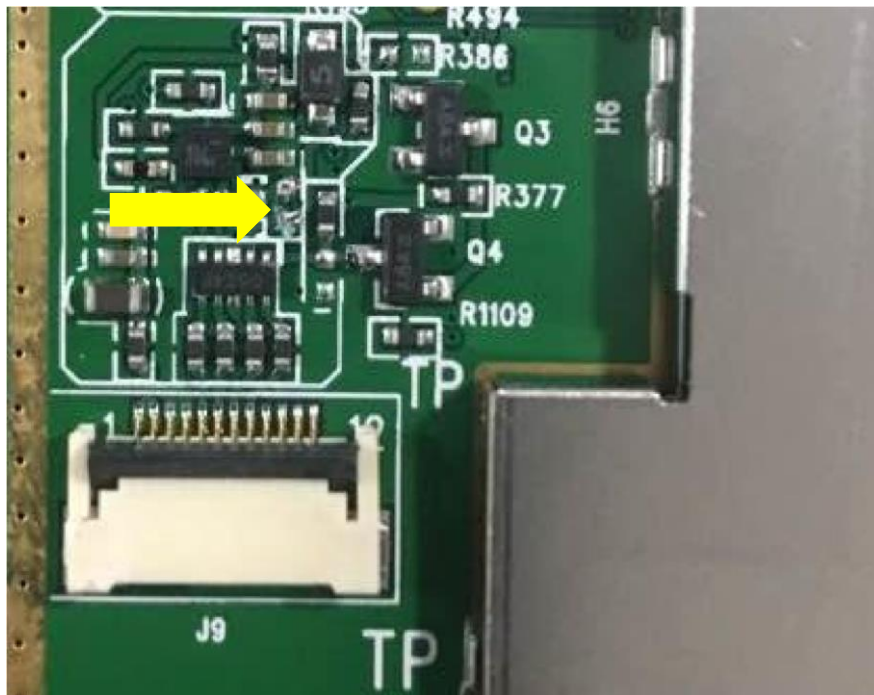
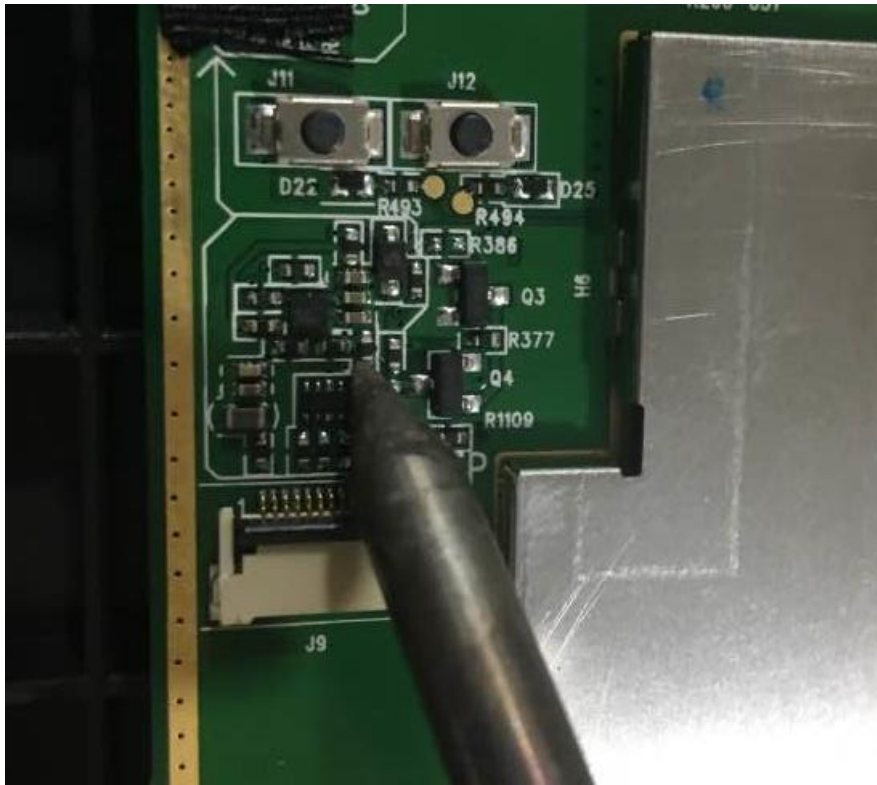


Note: After you install properly the new front shell turn on the MaxiSys MS906 MS906BT and test it, if the Touch Panel is not working, remove the front shell and please follow the next steps below.

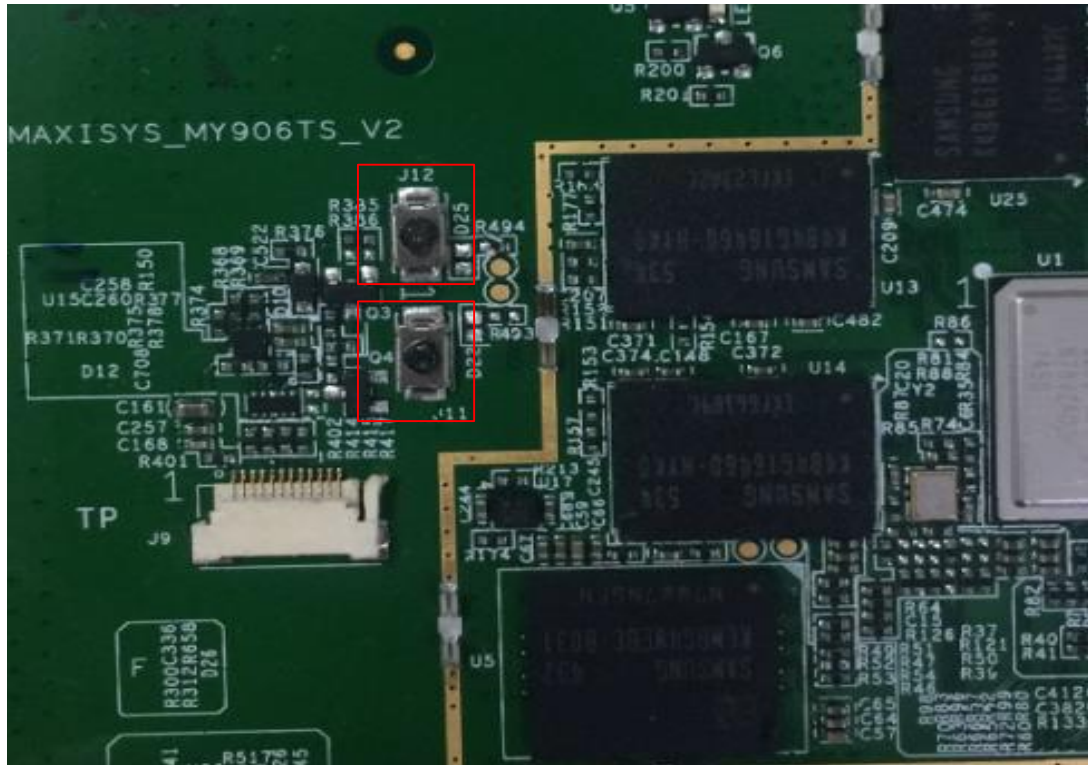
4. Locate the R375 Chip at the upper left side of the Main board.



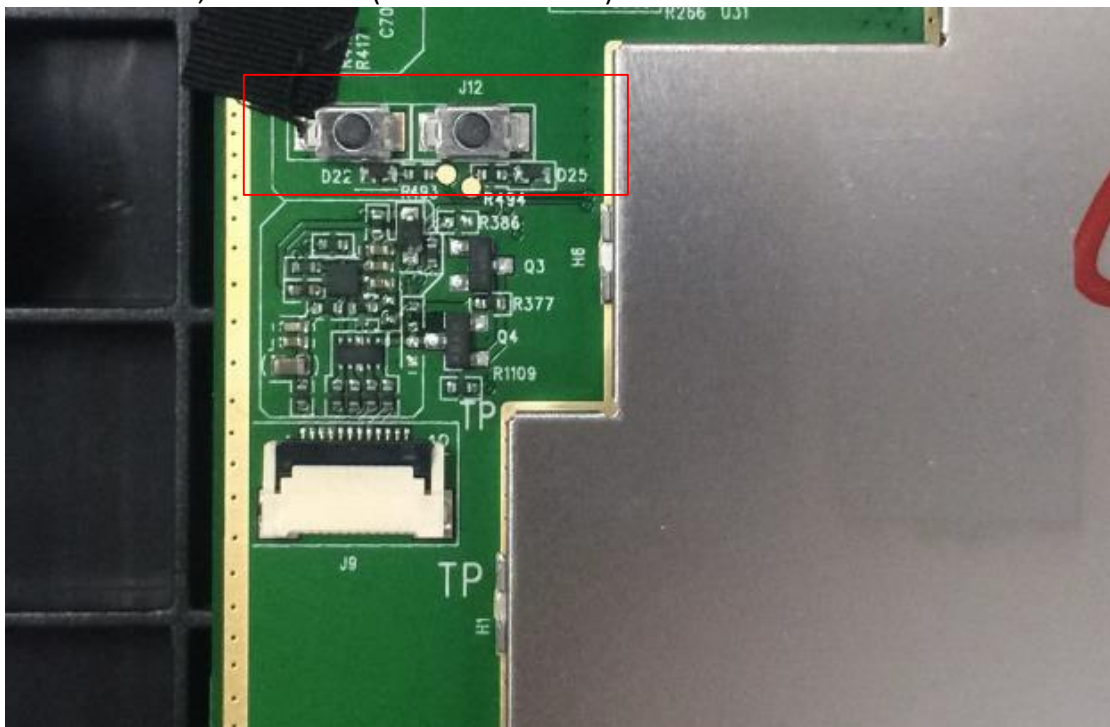
5. Using an iron soldier, remove carefully the Chip heating it at one of it sides.



6. Remove R375 Chip for MS906,MS906BT,MS906TS
7. Remove J11, J12 buttons (as showed below) for MS06BT, MS906TS



8. Remove J11, J12 buttons (as showed below) for MS906



9. Pasting way of TP for MS906,MS906BT,MS906TS



10. Now, make the connections between the Main Board and the new front shell, which include the new Touch Panel and LCD Screen. Remember to close the secure-clip on each connection between the Main Board and Light Sensor, Touch Panel and LCD Screen.