

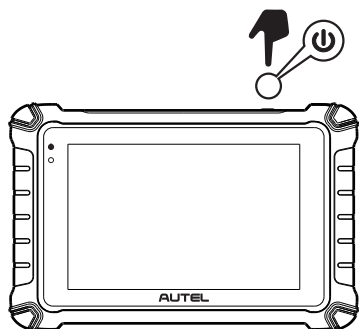
*Thank you for purchasing this Autel tool. Our tools are manufactured to a high standard and — when used according to these instructions and properly maintained — will provide years of trouble-free performance.*

### Getting Started



**IMPORTANT:** Before operating or maintaining this unit, please read these instructions carefully, paying extra attention to the safety warnings and precautions. Failure to use this product properly may cause damage and/or personal injury and will void the product warranty.

1



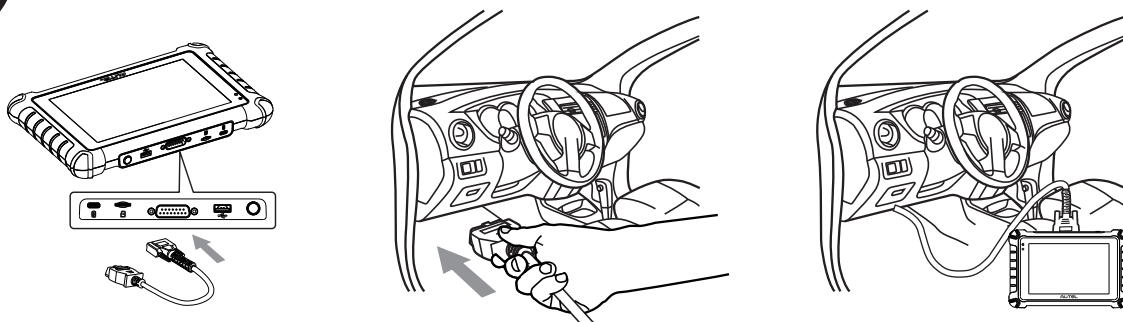
- Press and hold the **Power/Lock** button to turn on the tablet.
- Connect the female adapter of the main cable to the tablet and tighten the captive screws.

2



- Scan the QR code above to visit our website at [pro.autel.com](http://pro.autel.com).
- Create an Autel ID and register the product with its serial number and password.

3



- Connect the 16-pin male adapter of the main cable to the vehicle's DLC, which is generally located under the vehicle dashboard.
- Your tablet is now ready for use.