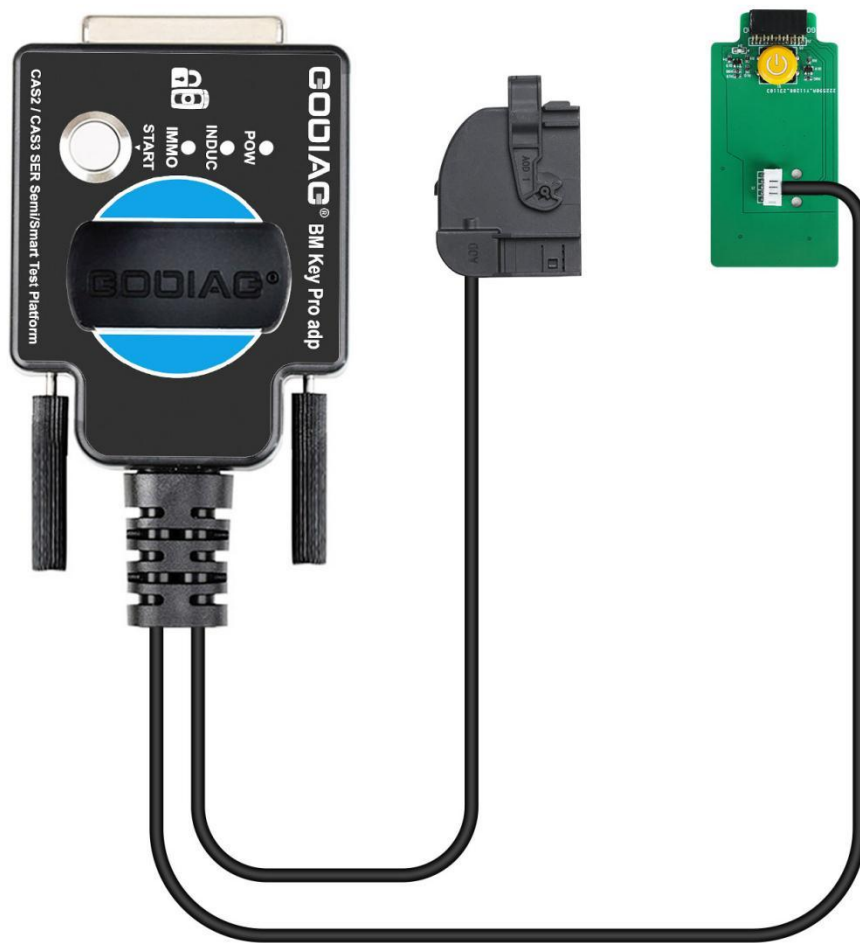


GODIAG CAS2 CAS3 SER Semi Smart Test Platform



User Manual

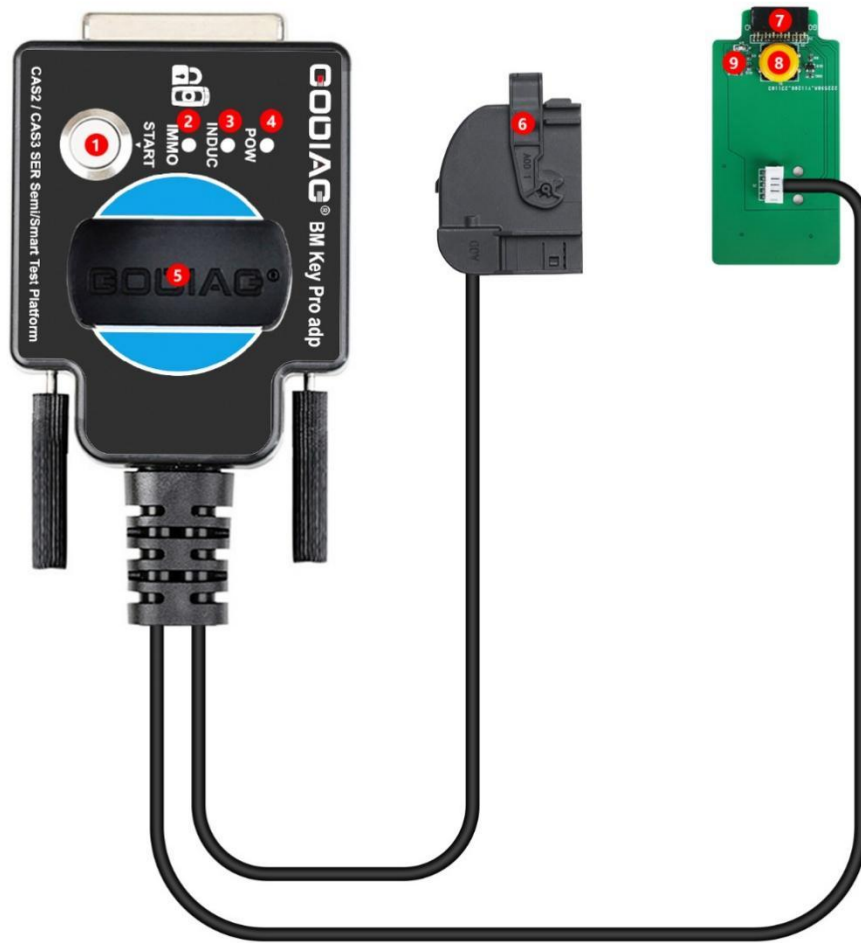
2024 V1.1

Godiag CAS2 CAS3 SER Semi Smart Test Platform is a dedicated device developed for BMW locksmiths, maintenance engineers and CAS2 / CAS3,CAS3+ CAS3++ programming engineers. This product is suitable for magnetic semi-intelligent or smart keys. Note: This platform does not support mechanical key CAS2.



1. Check whether CAS2 / CAS3, CAS3+ CAS3++ modules and magnetic semi-intelligent/smart keys are synchronized.
2. Cooperate with the key programming devices like Xhorse vvd2 / bmw vvd2 bim tool / Autel im608 / CGDI BMW, etc., to perform all key lost matching or key addition operations.
3. CAS2 / CAS3, CAS3+ CAS3++ module diagnostics
4. CAS2 / CAS3, CAS3+ CAS3++ module programming

Product Structure

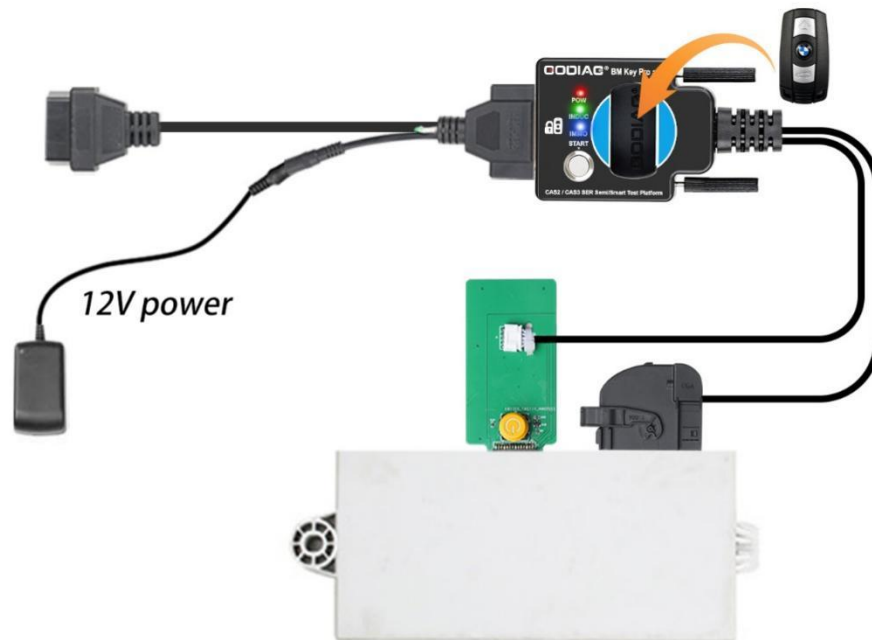


- (1) Check the start switch.
- (2) IMMO synchronization detection indicator light.
- (3) CAS module key induction coil indicator light.
- (4) Power indicator light.
- (5) Key identification port.
- (6) CAS module 41PIN connector.
- (7) CAS module 14PIN connector.
- (8) Analog start-stop switch.
- (9) Start/stop button light.

Functions:

A. Module and key synchronization detection:

Check whether the CAS2 / CAS3, CAS3+ CAS3++ module and the magnetic semi-intelligent smart key can be synchronized:



Step 1: Connect the CAS2/CAS3, CAS3+ CAS3++ modules according to the connection diagram.

Step 2: Put the key into the key sensing area.

Step 3: Connect the power supply and the corresponding power indicator light will light up. The start/stop button light is on. The coil sensor light will flash. [Indicates that the module can send out the key sensing signal normally. If the key and the module are synchronized, the light will flash regularly or stay on. If the key and module are out of sync, the flashing will be irregular and will stop after one minute.]

Step 4: Press the start switch. [If the key is synchronized with the CAS module, the IMMO synchronization detection indicator light will light up and the internal buzzer of the machine will sound. If the key is not synchronized with the CAS module, the IMMO synchronization detection indicator light will not light up and the internal buzzer of the machine will not sound.]

Step 5: Press the analog start and stop button, the IMMO synchronization detection indicator light will go out after 3 seconds. Press the analog start/stop button again and the IMMO synchronization detection indicator light will light up.

The following uses Xhorse vvd2 device to perform BMW CAS2/CAS3, CAS3+ CAS3++ semi-intelligent/smart key programming and matching operations:

1. Connect the CAS2/CAS3, CAS3+ CAS3++ module and the key programming diagnostic device according to the connection diagram.

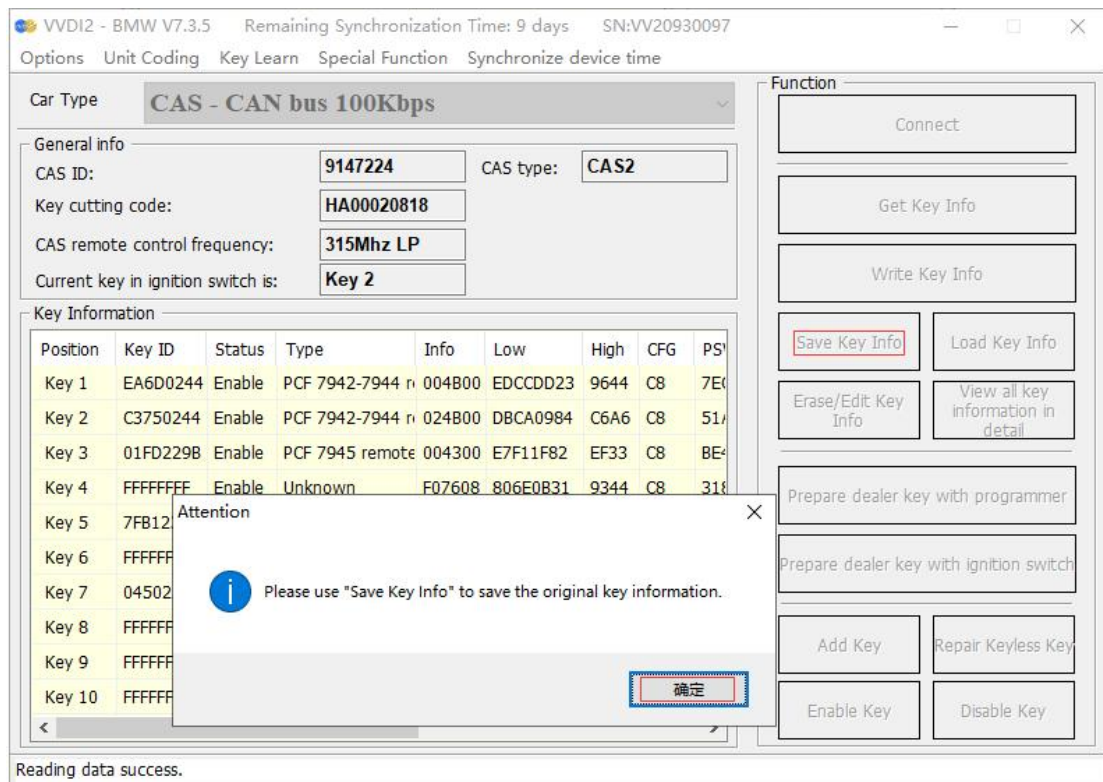


- 2 Select “key learn—CAS Key Learn---Connect”.

Reading data success.

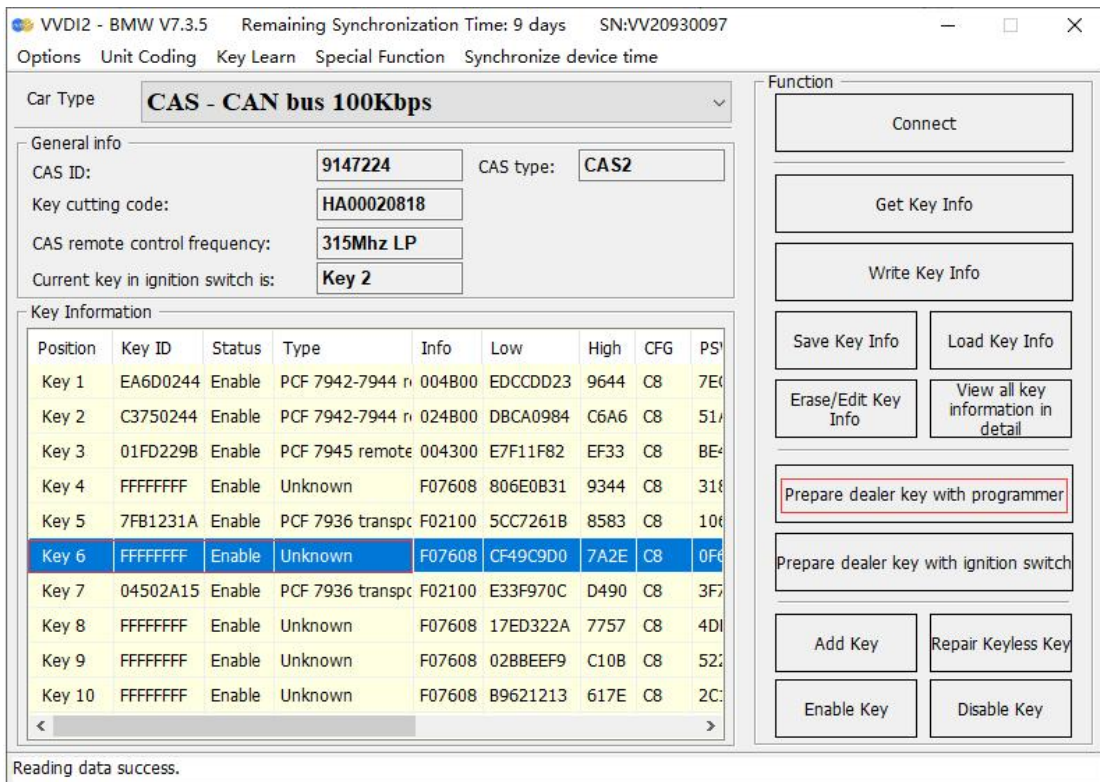
Position	Key ID	Status	Type	Info	Low	High	CFG	PS
Key 1	EA6D0244	Enable	PCF 7942-7944 r	004B00	EDCCDD23	9644	C8	7E0
Key 2	C3750244	Enable	PCF 7942-7944 r	024B00	DBCA0984	C6A6	C8	51A
Key 3	01FD229B	Enable	PCF 7945 remote	004300	E7F11F82	EF33	C8	BE4
Key 4	FFFFFFFF	Enable	Unknown	F07608	806E0B31	9344	C8	318
Key 5	7FB1231A	Enable	PCF 7936 transp	F02100	5CC7261B	8583	C8	106
Key 6	FFFFFFFF	Enable	Unknown	F07608	CF49C9D0	7A2E	C8	0F6
Key 7	04502A15	Enable	PCF 7936 transp	F02100	E33F970C	D490	C8	3F7
Key 8	FFFFFFFF	Enable	Unknown	F07608	17ED322A	7757	C8	4D1
Key 9	FFFFFFFF	Enable	Unknown	F07608	02BBEEF9	C10B	C8	522
Key 10	FFFFFFFF	Enable	Unknown	F07608	B9621213	617E	C8	2C2

3. After successfully identifying the CAS information, select “Get Key Info” and “Save Key Info”.



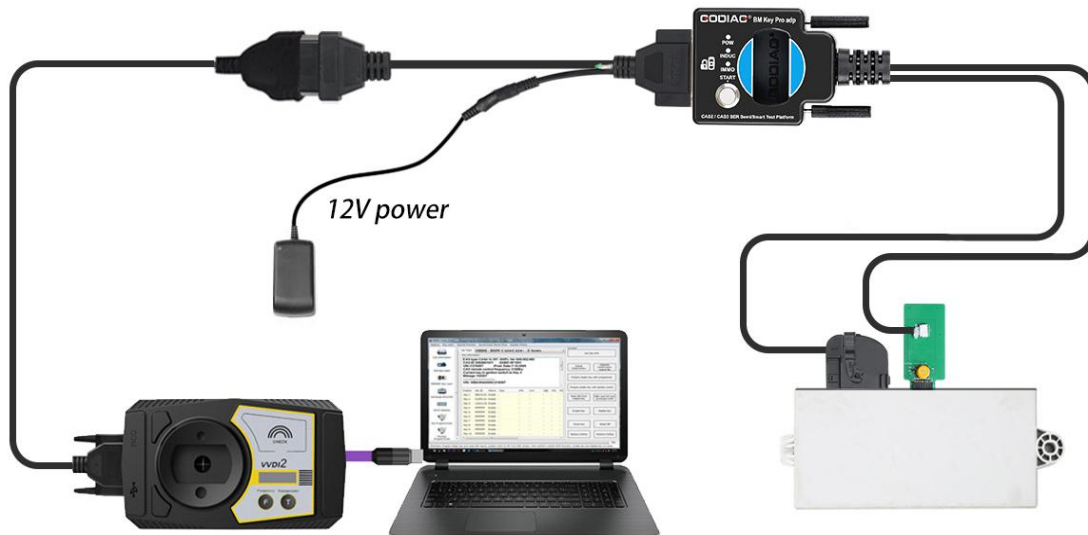
4. Select an unused key position, be sure to select the “prepare dealer key with programmer” menu, and use the VVDI2 key programmer to generate the key. If the key is placed in the GODIAG CAS2 CAS3 SER Semi Smart Test Platform key sensing area, the dealer key will not be generated.

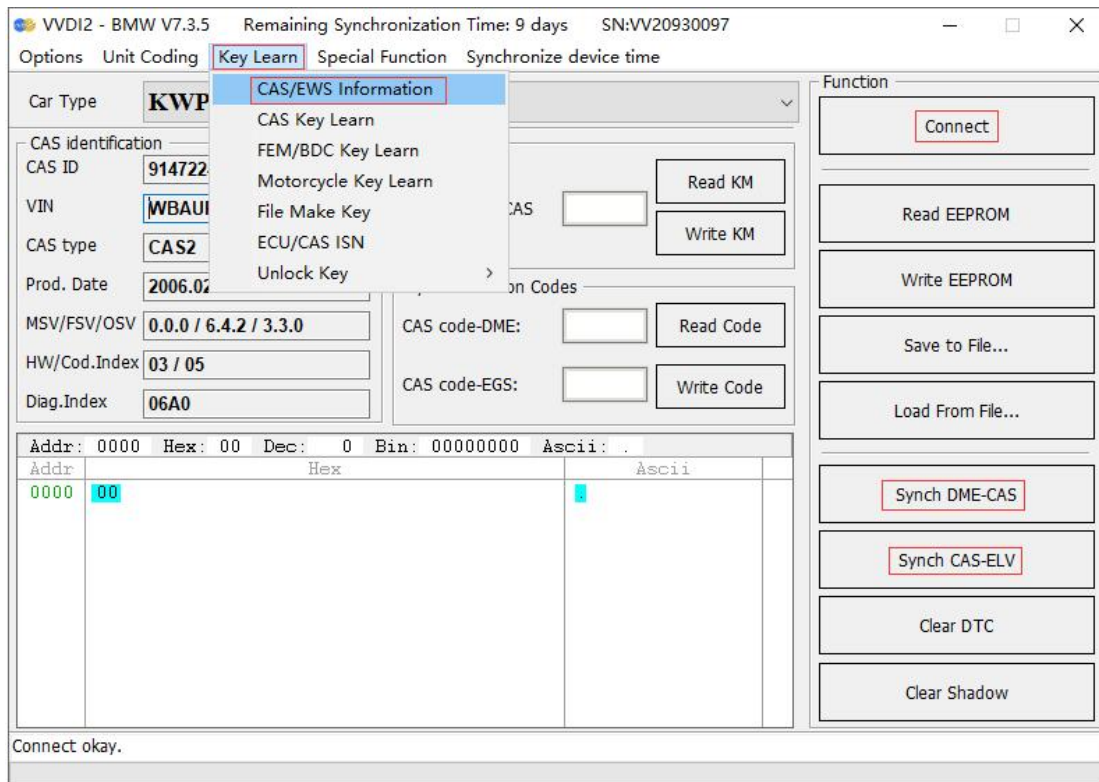




5. After programming the dealer key, put the key into the Godiag CAS2 CAS3 SER Semi Smart Test Platform induction port for testing. For test steps, please refer to “Synchronous Detection of Module and Key”.

If the IMMO light cannot light up, enter the VVDI2 menu “Key Learn—CAS/EWS Information—Connect—Synch DME-CAS or Synch CAS-ELV”. [When performing synchronization, the key must be placed in the key sensing area of the VVDI2 device.]





Shenzhen Sinoy Technology Co.,Ltd

All Rights Reserved

www.godiag.com

+86 18813687743

Sales@GoDiag.com



Thanks for reading!